



HEINE Veterinary ENT diagnostic instruments



Slit Illumination Head



Operating Otoscope



BETA200 F.O.  
 VET Otoscope



BETA100  
 VET Otoscope

	Housing construction			
Metal	<input type="checkbox"/>	<input type="checkbox"/>	<input type="checkbox"/>	<input type="checkbox"/>
	Swivel lens – Magnification			
Glass/Magnification 1.6x	<input type="checkbox"/>			
Glass/Magnification 2.5x		<input type="checkbox"/>	<input type="checkbox"/>	<input type="checkbox"/>
	Illumination			
F.O.	<input type="checkbox"/>		<input type="checkbox"/>	
Direct		<input type="checkbox"/>		<input type="checkbox"/>
	Instrument size			
Professional	<input type="checkbox"/>	<input type="checkbox"/>	<input type="checkbox"/>	<input type="checkbox"/>
	Available power sources			
Battery 2.5V	<input type="checkbox"/>	<input type="checkbox"/>	<input type="checkbox"/>	<input type="checkbox"/>
Rechargeable battery 3.5V	<input type="checkbox"/>	<input type="checkbox"/>	<input type="checkbox"/>	<input type="checkbox"/>
	Tips			
Long, closed specula	<input type="checkbox"/>			
Slit metal specula, open	<input type="checkbox"/>			
Spreadable speculum	<input type="checkbox"/>			
Short, closed specula	<input type="checkbox"/>			<input type="checkbox"/>
Reusable specula		<input type="checkbox"/>		
UniSpec VET disposable tips	<input type="checkbox"/>	<input type="checkbox"/>		
VET reusable specula			<input type="checkbox"/>	<input type="checkbox"/>
AllSpec disposable tips (with adaptor)		<input type="checkbox"/>		<input type="checkbox"/>
Insufflation port			<input type="checkbox"/>	<input type="checkbox"/>
Page	028	030	031	032

\* with Adaptor for UniSpec VET disposable tips

\*\* with Adaptor for reusable VET specula

\*\*\* with Adaptor for AllSpec tips

## Slit Illumination Head and accessories



- ⋄ **Solid metal construction.** Will last a lifetime.
- ⋄ **Slit instrument head.** Simplifies the use of instruments.
- ⋄ **Fiber optics illumination.** Bright, homogeneous light.
- ⋄ **Multi-coated, scratch-resistant swivel lens with 1.6x magnification.**  
High-resolution image.
- ⋄ **Simple open construction.** Easy to clean and disinfect with conventional solutions.
- ⋄ **Double bayonet lock for specula.** Specula mounted firmly by double lock.

Slit Illumination Head	2.5V	3.5V
with swivel lens	G-001.21.301	G-002.21.301
XHL Xenon Halogen spare bulb	X-001.88.077	X-002.88.078
Swivel lens		G-000.21.209

## HEINE Veterinary Diagnostic Sets

Set complete with: **Slit illumination head**

1 set long, closed specula (57mm x 4mm dia., 65mm x 6mm dia., 90mm x 7mm dia.)  
1 spare bulb, hard case



Veterinary Diagnostic Sets	2.5V	3.5V NiMH	3.5V Li-ion
BETA battery handle	G-112.10.118		
BETA R rechargeable handle for mains socket		G-112.20.376	G-112.27.376
BETA TR rechargeable handle with plug-in transformer		G-112.20.384	G-112.27.384
BETA NT rechargeable handle and NT300 charger		G-112.20.420	
Ⓛ BETA L rechargeable handle and NT300 charger			G-112.29.420

Set complete with: **Slit illumination head, BETA200 Ophthalmoscope**

1 set long, closed specula (57mm x 4mm dia., 65mm x 6mm dia., 90mm x 7mm dia.)  
1 spare bulb for each instrument, hard case



Veterinary Diagnostic Sets	2.5V	3.5V NiMH	3.5V Li-ion
BETA battery handle	G-148.10.118		
BETA R rechargeable handle for mains socket		G-148.20.376	G-148.27.376
BETA TR rechargeable handle with plug-in transformer		G-148.20.384	G-148.27.384
BETA NT rechargeable handle and NT300 charger		G-148.20.420	
Ⓛ BETA L rechargeable handle and NT300 charger			G-148.29.420


Ⓛ: Rechargeable handle with charge status display in the bottom insert.

## HEINE Veterinary Diagnostic Set



Set complete with: **Slit illumination head, BETA200 Ophthalmoscope**

- 5 short, closed SANALONS specula
- 10 UniSpec disposable ear specula with adaptor
- 1 set = 4 long, closed specula  
(57mm x 4 mm dia., 65mm x 6 mm dia., 90mm x 7 mm dia., 150mm x 10mm dia.)
- 2 slit specula
- spreadable speculum
- 1 spare bulb for each instrument
- hard case

Veterinary Diagnostic Sets	2.5V	3.5V NiMH	3.5V Li-ion
BETA battery handle	<b>G-150.10.118</b>		
BETA R rechargeable handle for mains socket		<b>G-150.20.376</b>	<b>G-150.27.376</b>
BETA TR rechargeable handle with plug-in transformer		<b>G-150.20.384</b>	<b>G-150.27.384</b>
BETA NT rechargeable handle and NT300 charger		<b>G-150.20.420</b>	
 BETA L rechargeable handle and NT300 charger			<b>G-150.29.420</b>

: Rechargeable handle with charge status display in the bottom insert.

## HEINE Operating Otoscope

### The greatest flexibility and most options for instrumentation



An all-round otoscope for instrumentation under magnification. Both the lens and speculum can be swivelled. For use with reusable specula and UniSpec disposable specula. With tip-adaptor (B-000.11.306) it is also possible to use AllSpec disposable tips.

- ∴ **Open construction.** Ideal for instrumentation.
- ∴ **XHL Xenon Halogen Technology.** Extremely bright, white light.
- ∴ **Swivelling lens and speculum.** Clears the way for access and examination under magnification and illumination.
- ∴ **2.5x lens in protective frame.** Prevents scratching.
- ∴ **The relative positions of light bulb and speculum can be fixed.** Helps with instrumentation, easily returned to normal position.

Operating Otoscope	2.5V	3.5V
with 1 set = 6 reusable specula, without handle	<b>B-001.11.494</b>	<b>B-002.11.494</b>
without specula, without handle	<b>B-001.11.492</b>	<b>B-002.11.492</b>
XHL Xenon Halogen spare bulb	<b>X-001.88.037</b>	<b>X-002.88.049</b>

## HEINE Operating Otoscope ENT Diagnostic Set




Set complete with: **Operating Otoscope**

1 set (6 pcs.) of reusable specula (B-000.11.221)

10 UniSpec disposable specula, 4 mm dia. (B-000.11.237)

spare bulb

hard case

Operating Otoscope Sets	2.5V	3.5V NiMH	3.5V Li-ion
BETA battery handle	<b>B-188.10.118</b>		
BETA R rechargeable handle for mains socket		<b>B-188.20.376</b>	<b>B-188.27.376</b>
BETA TR rechargeable handle with plug-in transformer		<b>B-188.20.384</b>	<b>B-188.27.384</b>
BETA NT rechargeable handle and NT300 charger		<b>B-188.20.420</b>	
 BETA L rechargeable handle and NT300 charger			<b>B-188.29.420</b>

: Rechargeable handle with charge status display in the bottom insert.

## HEINE BETA® 200 Fiber Optic (F.O.) VET Otoscope

### Veterinary Otoscope with Fiber Optic illumination



Solid, all-metal construction. A quality instrument for the Vet's office with Fiber Optic (F.O.) illumination. Insufflation port. The swivel window features an airtight seal.

- ⚡ **Distal Fiber Optic illumination.** Perfectly even illumination of auditory canal and tympanum.
- ⚡ **Large, scratch-resistant glass viewing window with 2.5x magnification.** Unobstructed view, distortion-free image.
- ⚡ **Swivelling viewing window built into instrument.** Useful for instrumentation, cannot be mislaid.
- ⚡ **Insufflation port.** Reliable test of tympanic mobility.
- ⚡ **Durable metal body, matt chrome-plated.** Unbreakable, long-life.
- ⚡ **XHL Xenon Halogen Technology.** Extremely bright, white light.
- ⚡ **For use with reusable SANALON S VET Specula (G-000.21.213).**
- ⚡ **Instrument head matt-black inside.** Eliminates reflexes.



Fiber Optic (F.O.)  
 illumination

BETA 200 VET Otoscope	2.5V	3.5V
without specula, without handle	G-001.21.250	G-002.21.250
XHL Xenon Halogen spare bulb	X-001.88.077	X-002.88.078

## HEINE Veterinary Diagnostic Sets

Set complete with: **BETA 200 Ophthalmoscope, BETA 200 VET Otoscope**  
 3 reusable SANALON S VET specula  
 1 spare bulb for each instrument  
 zipper case



Veterinary Diagnostic Sets	2.5V	3.5V NiMH	3.5V Li-ion
BETA battery handle	G-151.10.118		
BETA R rechargeable handle for mains socket		G-151.20.376	G-151.27.376
BETA TR rechargeable handle with plug-in transformer		G-151.20.384	G-151.27.384
BETA NT rechargeable handle and NT 300 charger		G-151.20.420	
Ⓛ BETA L rechargeable handle and NT 300 charger			G-151.29.420

Ⓛ: Rechargeable handle with charge status display in the bottom insert.

## HEINE BETA®100 VET Otoscope

### Veterinary Otoscope with direct illumination



Direct Xenon Halogen illumination

Otoscope with all-metal construction and direct Xenon Halogen illumination. Suitable for use with short, closed specula. With the use of the VET adaptor (G-000.21.214), it is possible to fit reusable VET specula for ear examinations.

- ∴ **All-metal housing.** Exceptionally-tough and long-lasting.
- ∴ **XHL Xenon Halogen Technology.** Extremely bright, white light.
- ∴ **Large, scratch-resistant glass viewing window with 2.5x magnification.** Unobstructed view, distortion-free image.
- ∴ **Swivelling viewing window built into instrument.** Useful for instrumentation, cannot be mislaid.
- ∴ **Insufflation port.** Reliable test of tympanic mobility.
- ∴ **Can be used with short, closed specula G-000.21.316 (no adaptor required).**
- ∴ **Versatile, useful for very small animals.**
- ∴ **Instrument head matt-black inside.** Eliminates reflexes.

BETA100 VET Otoscope	2.5V	3.5V
without specula, without handle	G-001.21.260	G-002.21.260
XHL Xenon Halogen spare bulb	X-001.88.037	X-002.88.049

## Reusable VET specula

### for BETA200 VET and BETA100 VET with adaptor



9 mm dia.

6 mm dia.

4 mm dia.



[01]

A VET adaptor [01] is required for use of VET reusable tips on the BETA 100 VET.

- ∴ **Made of high-density SANALON S with a smooth external surface.** Dust and germs are easily removed. Disinfection and autoclaving at up to 134 °C is possible.
- ∴ **Ergonomic shape.** Atraumatic.
- ∴ **Convenient fixation system.** Positive fit to otoscope head.

Reusable SANALON S specula	
1 set = 3 reusable SANALON S specula	G-000.21.213
61 mm long / 4 mm dia.	G-000.21.210
61 mm long / 6 mm dia.	G-000.21.211
61 mm long / 9 mm dia.	G-000.21.212
Adaptor for reusable SANALON S VET specula [01]	G-000.21.214

Long, closed specula

for Slit Illumination Head

- ∴ **Metal construction, chrome-plated.** Easy to clean, disinfect and sterilize.
- ∴ **Double bayonet lock for specula.** Firm mounting of specula to head.



57 mm 65 mm 90 mm 150 mm  
 4 mm dia. 6 mm dia. 7 mm dia. 10 mm dia.

**Closed specula**

57 mm long / 4 mm dia.	<b>G-000.21.330</b>
65 mm long / 6 mm dia.	<b>G-000.21.331</b>
90 mm long / 7 mm dia.	<b>G-000.21.332</b>
150 mm long / 10 mm dia.	<b>G-000.21.350</b>

Slit metal specula, open

for Slit Illumination Head

- ∴ **High-quality chrome-plated metal construction.** Easy to clean, disinfect and sterilize.
- ∴ **Matt internal surfaces.** Reduced reflexes.
- ∴ **60° opening with rounded edges.** Ideal for instrumentation, atraumatic insertion.
- ∴ **Double bayonet fitting.** Positive fit.



65 mm long 90 mm long  
 6 mm dia. 7 mm dia.

**Slit metal specula**

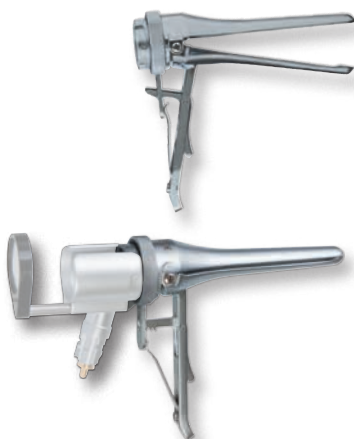
65 mm long / 6 mm dia.	<b>G-000.21.341</b>
90 mm long / 7 mm dia.	<b>G-000.21.342</b>

Spreadable speculum for Slit Illumination Head

for Slit Illumination Head

This versatile instrument is widely used as a universal speculum for small animals.

- ∴ **Distal jaw opens up to 28 mm with 4 click-stops.** Useful for examination and therapy.
- ∴ **High-quality, chrome-plated metal construction.** Easy to clean, disinfect and sterilize.
- ∴ **Matt internal surfaces.** Avoids reflexes.
- ∴ **Oval branches with rounded edges.** Ideal for instrumentation, atraumatic.
- ∴ **2 bayonet locks.** Firm mounting of spreadable Speculum to head.



**Spreadable speculum**

Spreadable speculum for Slit Illumination Head (95 mm long)	<b>G-000.21.360</b>
---	---------------------

### Short, closed specula

#### for Slit Illumination Head and BETA100 VET Otoscope



5.5 mm dia. 4.5 mm dia. 3.5 mm dia.



2.8 mm dia. 2.2 mm dia.



- ∴ **Made of high-density SANALON S with a smooth external surface.** Dust and germs are easily removed. Disinfection and autoclaving at up to 134 °C is possible.
- ∴ **Ergonomic shape.** Painless atraumatic insertion.
- ∴ **Integral metal ring with 2 bayonet locks.** Firm mounting of specula to head.
- ∴ **40mm long.**

#### Short, closed SANALON S specula

1 set = 5 veterinary specula in SANALON S	G-000.21.316
40mm long / 2.2mm dia.	G-000.21.310
40mm long / 2.8mm dia.	G-000.21.311
40mm long / 3.5mm dia.	G-000.21.312
40mm long / 4.5mm dia.	G-000.21.313
40mm long / 5.5mm dia.	G-000.21.314

### Reusable Specula

#### for Operating Otoscope



2.2 mm dia. 2.8 mm dia. 3.5 mm dia.



4.5 mm dia. 5.5 mm dia. 10 mm dia.

- ∴ **Moulded in high-density SANALON S, smooth surface.** Easy to clean, can be disinfected with conventional solutions. Autoclavable at 134 °C.
- ∴ **Ergonomic Design.** Painless and atraumatic insertion.
- ∴ **Metal security lock with bayonet fitting.** Long-lasting, positive fit to the otoscope.

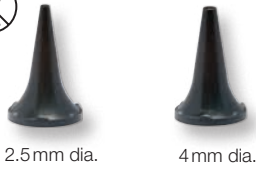
#### Reusable Specula (black)

1 set = 5 ear specula and 1 nose speculum	B-000.11.221
3 specula 3.5/4.5/5.5mm dia.	B-000.11.222
Ear speculum 2.2 mm dia.	B-000.11.215
Ear speculum 2.8 mm dia.	B-000.11.216
Ear speculum 3.5 mm dia.	B-000.11.217
Ear speculum 4.5 mm dia.	B-000.11.218
Ear speculum 5.5 mm dia.	B-000.11.219
Nose speculum 10 mm dia.	B-000.11.220



### HEINE UniSpec® disposable ear specula

#### for BETA 100 VET, Operating Otoscope and Slit Illumination Head



The adaptor illustrated [01] is necessary when using UniSpec specula with the Slit Illumination Head.

- ∴ **No cleaning necessary.** Saves time.
- ∴ **Hygienic and safe.** Eliminates cross-infection.
- ∴ **Packed in units of 1000.** Assures a competitive price.
- ∴ **Original HEINE design and manufacture.** Guaranteed good fit to the instrument head.

#### UniSpec disposable ear specula (grey)

Pack of 1000 UniSpec disposable specula 2.5 mm dia.	<b>B-000.11.242</b>
Pack of 1000 UniSpec disposable specula 4 mm dia.	<b>B-000.11.241</b>
Adaptor for use with Slit Illumination Head [01]	<b>G-000.21.302</b>

⊗: Single use only.

### HEINE AllSpec® Disposable tips

#### for BETA100 VET and Operating Otoscope



A tip adapter [04] is required for use of AllSpec disposable tips on the BETA 100 VET and on the operation otoscope.

- ∴ **For single use.** Hygienic, no cross-infection.
- ∴ **Original HEINE design.** Firm fit to the otoscope head.
- ∴ **Assured quality.** No sharp edges.

#### AllSpec Disposable tips (grey)

Pack of 1000 pcs. 2.5 mm dia. [03]	<b>B-000.11.128</b>
Pack of 1000 pcs. 4 mm dia. [03]	<b>B-000.11.127</b>
Case of 10 dispenser packs of 250 tips, 2.5 mm dia [01]	<b>B-000.11.151</b>
Case of 10 dispenser packs of 250 tips, 4 mm dia [01]	<b>B-000.11.150</b>
AllSpec Tip-dispenser [02]	<b>B-000.11.148</b>

Adaptor for AllSpec tips [04]	<b>B-000.11.306</b>
-------------------------------	---------------------

#### AllSpec Tip-dispenser [02]

**The right size, visible and instantly available.** A clean new tip for each and every patient. Contents: 50 pcs. Ø 2.5 mm and 50 pcs. Ø 4 mm.

⊗: Single use only.

### Insufflation Bulb

#### for BETA 200 VET and BETA100 VET Otokope



- ∴ **For pneumatic testing.**

Insufflation bulb	<b>B-000.11.240</b>
-------------------	---------------------