



HEINE Otoscopes



BETA400 F.O. BETA200 F.O. K180 F.O. mini3000 F.O. mini3000 LED F.O. BETA100 K100 mini3000

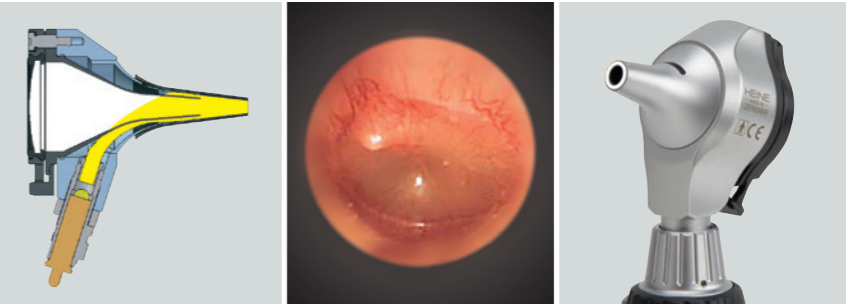
	BETA400 F.O.	BETA200 F.O.	K180 F.O.	mini3000 F.O.	mini3000 LED F.O.	BETA100	K100	mini3000
Housing construction								
Metal	<input type="checkbox"/>	<input type="checkbox"/>				<input type="checkbox"/>		
Polycarbonate			<input type="checkbox"/>	<input type="checkbox"/>	<input type="checkbox"/>		<input type="checkbox"/>	<input type="checkbox"/>
Viewing window								
Glass	<input type="checkbox"/>	<input type="checkbox"/>				<input type="checkbox"/>		
Acrylic			<input type="checkbox"/>	<input type="checkbox"/>	<input type="checkbox"/>		<input type="checkbox"/>	<input type="checkbox"/>
3x magnification		<input type="checkbox"/>	<input type="checkbox"/>	<input type="checkbox"/>	<input type="checkbox"/>	<input type="checkbox"/>	<input type="checkbox"/>	<input type="checkbox"/>
4.2x magnification	<input type="checkbox"/>							
Illumination								
LED F.O.				<input type="checkbox"/>				
XHL F.O.	<input type="checkbox"/>	<input type="checkbox"/>	<input type="checkbox"/>	<input type="checkbox"/>				
XHL Direct						<input type="checkbox"/>	<input type="checkbox"/>	<input type="checkbox"/>
Instrument size								
Professional	<input type="checkbox"/>	<input type="checkbox"/>	<input type="checkbox"/>			<input type="checkbox"/>	<input type="checkbox"/>	
Compact				<input type="checkbox"/>	<input type="checkbox"/>			<input type="checkbox"/>
Available power sources								
Battery 2.5V	<input type="checkbox"/>	<input type="checkbox"/>	<input type="checkbox"/>	<input type="checkbox"/>	<input type="checkbox"/>	<input type="checkbox"/>	<input type="checkbox"/>	<input type="checkbox"/>
Rechargeable battery 2.5V				<input type="checkbox"/>	<input type="checkbox"/>			<input type="checkbox"/>
Rechargeable battery 3.5V	<input type="checkbox"/>	<input type="checkbox"/>	<input type="checkbox"/>			<input type="checkbox"/>	<input type="checkbox"/>	
Tips								
Reusable tips	<input type="checkbox"/>	<input type="checkbox"/>	<input type="checkbox"/>	<input type="checkbox"/>	<input type="checkbox"/>			<input type="checkbox"/>
Reusable Specula						<input type="checkbox"/>	<input type="checkbox"/>	
AllSpec Disposable tips	<input type="checkbox"/>	<input type="checkbox"/>	<input type="checkbox"/>	<input type="checkbox"/>	<input type="checkbox"/>	<input type="checkbox"/>	<input type="checkbox"/>	<input type="checkbox"/>
UniSpec Disposable Specula						<input type="checkbox"/>	<input type="checkbox"/>	
Tip-Adaptor						<input type="checkbox"/>	<input type="checkbox"/>	
Insufflation Bulb								
Insufflation port	<input type="checkbox"/>	<input type="checkbox"/>	<input type="checkbox"/>	<input type="checkbox"/>	<input type="checkbox"/>	<input type="checkbox"/>	<input type="checkbox"/>	
Page	007	009	011	012	014	017	019	020

* with Tip-Adaptor

** Optional insufflation port connector available



High quality Fiber Optic (F.O.) illumination with high-intensity XHL Xenon Halogen bulb.



HEINE BETA® 400 Fiber Optic (F.O.) Otoscope

The top of the line Fiber Optic Otoscope with 4.2x Magnification

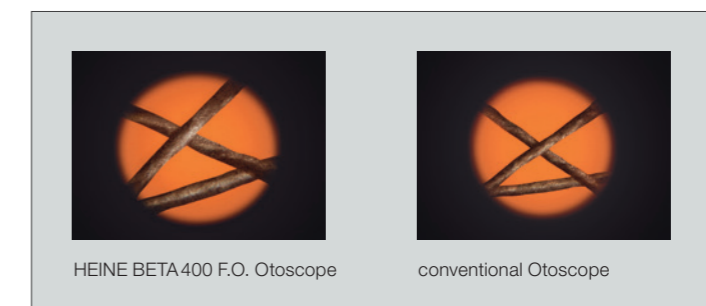


- ∴ 4.2x Magnification
- ∴ Exceptional depth of field
- ∴ One hand operation

Otoscope with all metal housing and scratch resistant glass optics which guarantee a long instrument life and High quality patient assessments.

- ∴ **Instrumentation window with 4.2x magnification.** The unique (patent pending) design allows the permanently attached optical system to be flipped open and out of the way, enabling instrumentation and ease of cleaning.
- ∴ **Exceptional depth of field.** Provides sharp spatial images in a convenient working range.
- ∴ **Large field of view.** Gives necessary overview and perfect orientation during examinations.
- ∴ **Multi-coated precision optics.** Offer high resolution and distortion free images.
- ∴ **Fiber Optic Illumination.** Ensures homogeneous, bright exposure and an unobstructed view of the ear canal and tympanum.
- ∴ **Integrated Insufflation port.** Offers proper tympanic mobility testing.

BETA 400 F.O. Otoscope	AV	TL
with 4 reusable tips, without handle	B-002.11.401	B-002.11.401 TL
same, without tips, without handle	B-002.11.400	B-002.11.400 TL
XHL Xenon Halogen spare bulb	X-002.88.077	X-002.88.044



HEINE BETA 400 F.O. Otoscope

conventional Otoscope



HEINE BETA® 400 Fiber Optic (F.O.) ENT Diagnostic Sets



Set complete with: **BETA 400 Fiber Optic (F.O.) Otoscope**
 1 set (4 pcs.) of reusable tips (B-000.11.111)
 5 of both AllSpec disposable tips 2.5 and 4 mm Ø (B-000.11.119)
 spare bulb
 hard case

BETA 400 F.O. Otoscope Sets	2.5V
BETA battery handle	B-151.10.118
BETA R rechargeable handle for mains socket	B-151.20.376
BETA NT rechargeable handle and NT 300 charger	B-151.20.420
BETA L rechargeable handle and NT 300 charger	B-151.29.420

: Rechargeable handle with LED charge status display in the bottom insert.

: To order your kit with the TL "Twist Lock" connection style, simply add the suffix "TL" to the end of the item number. e.g. B-141.20.376 TL for the set with Twist Lock.



HEINE BETA 200® Fiber Optic (F.O.) Otoscope

The ultimate in performance and quality

Solid, all metal construction. A quality instrument for the physician's office with Fiber Optic (F.O.) illumination.



- ∴ **All metal housing matte, chrome plated.** Durable, long lasting and easy to clean.
- ∴ **Instrument head matte black inside.** Eliminates reflexes.
- ∴ **Distal Fiber Optic (F.O.) illumination with XHL Xenon Halogen Technology.** Homogenous, reflex free illumination of ear canal and tympanum.
- ∴ **Large, scratch-resistant glass viewing window with 3x magnification.** Unobstructed view, distortion free image.
- ∴ **Airtight window seal.** Reliable test of tympanic mobility.
- ∴ **Swiveling viewing window built into instrument.** Useful for instrumentation, cannot be misplaced.

BETA 200 F.O. Otoscope	AV	TL
with 4 reusable tips without handle	B-002.11.501	B-002.11.501 TL
same, without tips, without handle	B-002.11.500	B-002.11.500 TL
XHL Xenon Halogen spare bulb	X-002.88.078	X-002.88.044

- ∴ **Fiber Optic (F.O.) illumination**
- ∴ **All metal housing**
- ∴ **3x magnification**
- ∴ **Silica glass viewing window**

HEINE BETA 200® Fiber Optic (F.O.) ENT Diagnostic Sets

Set complete with **BETA 200 Fiber Optic (F.O.) Otoscope**,
 1 set (4 pcs.) of reusable tips (B-000.11.111),
 10 AllSpec disposable tips in hard case with:



BETA 200 F.O. Otoscope Sets	3.5V (NiMH)	3.5V
BETA R rechargeable handle for mains socket	B-141.20.376	B-141.27.376
BETA NT rechargeable handle and NT 300 charger	B-141.20.420	
BETA L rechargeable handle and NT 300 charger		B-141.29.420

: Rechargeable handle with LED charge status display in the bottom insert.

: To order your kit with the TL "Twist Lock" connection style, simply add the suffix "TL" to the end of the item number. e.g. B-141.20.376 TL for the set with Twist Lock.



HEINE BETA 200® Fiber Optic (F.O.) Diagnostic Sets



Set complete: **BETA 200 Ophthalmoscope, BETA 200 F.O. Otoscope**,
 1 set (4 pcs.) of reusable tips (B-000.11.111)
 5 of both AllSpec disposable tips 2.5 and 4 mm (B-000.11.119)
 hard case

BETA 200 Diagnostic Sets	3.5V (NiMH)	3.5V (LI ION)
BETA R rechargeable handle	A-132.20.376	A-132.27.376
BETA NT rechargeable handle and NT 300 charger	A-132.20.420	
Ⓛ BETA L rechargeable handle and NT 300 charger		A-132.29.420

Ⓛ: Rechargeable handle with LED charge status display in the bottom insert.

TL: To order your kit with the TL "Twist Lock" connection style, simply add the suffix "TL" to the end of the item number. e.g. B-141.20.376 TL for the set with Twist Lock.

HEINE K 180® Fiber Optic (F.O.) Otoscope

The standard, all around Fiber Optic Otoscope



Otoscope with Fiber Optic (F.O.) illumination constructed of light, high impact polycarbonate and **3x magnification** scratch-resistant acrylic viewing window. Otherwise, technically identical to the BETA200 F.O. Otoscope.

K 180 F.O. Otoscope	AV	TL
with 4 reusable tips, without handles	B-002.11.551	B-002.11.551 TL
same, without tips, without handles	B-002.11.550	B-002.11.550 TL
XHL Xenon Halogen spare bulb	X-002.88.078	X-002.88.044

- ⚡ Fiber Optic (F.O.) illumination
- ⚡ Polycarbonate construction

HEINE K 180® Fiber Optic (F.O.) Diagnostic Sets



Set complete with **K 180 Fiber Optic (F.O.) Otoscope**
 1 set (4 pcs.) of reusable tips (B-000.11.111),
 soft pouch with:

K 180 F.O. Otoscope Sets	3.5V (NiMH)	3.5V (LI ION)
BETA R rechargeable handle for mains socket	B-181.20.376	B-181.27.376
BETA NT rechargeable handle and NT 300 charger	B-181.20.420	
Ⓛ BETA L rechargeable handle and NT 300 charger		B-181.29.420

Ⓛ: Rechargeable handle with LED charge status display in the bottom insert.

TL: To order your kit with the TL "Twist Lock" connection style, simply add the suffix "TL" to the end of the item number. e.g. B-141.20.376 TL for the set with Twist Lock.



HEINE mini 3000® Fiber Optic (F.O.) Otoscope

Compact pocket otoscope with Fiber Optic (F.O.) illumination

Modern pocket otoscope in a unique, compact design. Handy and powerful. Can only be used with the mini3000 handle system. Available in black or blue.



- ∴ Modern pocket otoscope
- ∴ Fiber Optic (F.O.) illumination
- ∴ Switches off automatically
- ∴ Optional rechargeable handle

- ∴ **Instrument head matte black inside.** Eliminates reflexes.
- ∴ **Distal Fiber Optic (F.O.) illumination with enhanced XHL Xenon Halogen Technology producing 100% more light compared with conventional bulbs.** Homogenous, reflex free illumination of ear canal and tympanum.
- ∴ **2 piece handle and head.** Easy to maintain, flexible. Compatible with other mini 3000 instrument heads.
- ∴ **Insufflation port.** For pneumatic testing of tympanic mobility. Please order connector separately.
- ∴ **Viewing window with 3x magnification** and optimized casing surface for razor sharp images and minimal reflection. Swiveling viewing window built into instrument.
- ∴ **High quality handle: Chrome finish upper section/refined plastic.** Shockproof, sturdy, non-slip.
- ∴ **Attachment clip with integrated on/off switch.** Secure. Switches off automatically when placed in pocket. 20,000 switch cycles guaranteed.
- ∴ **Replaceable batteries.** Size AA, or optional rechargeable battery with mini NT charger*.

mini3000 F.O. Otoscope	2.5V
with mini3000 battery handle, 1 set (4 pcs.) reusable tips and 5 of both 2.5 and 4 mm dia. AllSpec disposable tips, with batteries	D-001.70.120
with mini3000 battery handle and 5 of both 2.5 and 4 mm dia. AllSpec disposable tips, with batteries	D-001.70.110
with mini3000 rechargeable handle and 5 of both 2.5 and 4 mm dia. AllSpec disposable tips	D-001.70.301
(please order mini NT table charger separately)	D-001.70.106
mini3000 F.O. Otoscope head without handle and without accessories	D-001.70.106
XHL Xenon Halogen spare bulb	X-001.88.105
Insufflation port connector for mini3000 F.O. Oscopes	D-000.80.101



*To upgrade to a rechargeable instrument, with mini NT charger, please see page 121.

HEINE mini3000® Fiber Optic (F.O.) Diagnostic Sets



Set complete with: **mini3000 Fiber Optic (F.O.) Otoscope**
 1 set (4 pcs.) reusable tips (B-000.11.111)
 5 each of 2.5 and 4 mm dia. AllSpec disposable tips (B-000.11.119)
 hard case

mini3000 Fiber Optic (F.O.) Diagnostic Sets	2.5V
with mini3000 battery handle with batteries	D-851.10.021



Set complete with: **mini3000 Ophthalmoscope, mini3000 F.O. Otoscope,**
 1 set (4 pcs.) reusable tips (B-000.11.111)
 5 each of 2.5 and 4 mm dia. AllSpec disposable tips (B-000.11.119)
 hard case

mini3000 Fiber Optic (F.O.) Diagnostic Sets	2.5V
with 2 mini3000 battery handles with batteries	D-873.11.021



Set complete with: **mini3000 Ophthalmoscope, mini3000 F.O. Otoscope,**
 mini NT table charger
 5 each of 2.5 and 4 mm dia. AllSpec disposable tips (B-000.11.119)

mini3000 Fiber Optic (F.O.) Diagnostic Sets	2.5V
with 2 mini3000 rechargeable handles	D-859.11.022*



**HEINE mini3000® LED Fiber Optic (F.O.) Otoscope
 with LED Illumination in HEINE Quality HQ**



- ⚡ Maintenance free pocket instrument
- ⚡ Bright LED illumination
- ⚡ Up to 10 hours operation time

Modern otoscope with maintenance free LED illumination. Twice as bright as a conventional Xenon Halogen instrument.

All of the features of the mini3000 F.O. Otoscope, with the addition of:

- ⚡ **Maintenance free**, no need to ever exchange the LED.
- ⚡ LED Thermal management for a **consistent light output throughout the whole working life**.
- ⚡ **High performance LED**: bright and absolutely homogeneous illumination with **excellent color rendering** – color temperature 4000K, color rendering index >95, and >90 rendering index of the color red.
- ⚡ **Twice as bright as** Xenon Halogen instruments.
- ⚡ **Exclusive Battery Performance Indicator**: When the instrument is switched on, the maximum light intensity is shown, then the light intensity is regulated down to the level that corresponds to the current charge status of the battery so you know when your batteries need changing.
- ⚡ **Exclusive fade-out function** reduces illumination intensity with battery level to let you know when to replace.
- ⚡ **Operation time up to 10 hours**. The batteries need to be changed less often and the rechargeable batteries last longer.

mini 3000 LED F.O. Otoscope	2.5V
with mini3000 battery handle, 1 set (4 pcs.) reusable tips and 5 of both 2.5 and 4 mm dia. AllSpec disposable tips, with batteries	D-008.70.120
with mini3000 battery handle and 5 of both 2.5 and 4 mm dia. AllSpec disposable tips, with batteries	D-008.70.110
with mini3000 rechargeable handle and 5 of both 2.5 and 4 mm dia. AllSpec disposable tips (please order mini NT table charger separately)	D-008.70.301
mini3000 LED F.O. Otoscope head without handle and without accessories	D-008.70.106
Insufflation port connector for mini3000 F.O. Oscopes	D-000.80.101



*To upgrade to a rechargeable instrument, with mini NT charger, please see page 121.

For information on HEINE battery and rechargeable handles see pages 117-121.

HEINE mini3000® LED Fiber Optic (F.O.) Diagnostic Sets



Set complete with: **mini3000 LED Fiber Optic (F.O.) Otoscope**
 1 set (4 pcs.) reusable tips (B-000.11.111)
 5 each of 2.5 and 4 mm dia. AllSpec disposable tips (B-000.11.119)
 hard case

mini 3000 LED Fiber Optic (F.O.) Diagnostic Sets	2.5V
mini3000 battery handle with batteries	D-885.20.021



Set complete with: **mini3000 LED Ophthalmoscope, mini3000 LED F.O. Otoscope**,
 1 set (4 pcs.) reusable tips (B-000.11.111)
 5 each of 2.5 and 4 mm dia. AllSpec disposable tips (B-000.11.119)
 hard case

mini3000 LED Fiber Optic (F.O.) Diagnostic Sets	2.5V
2 mini3000 battery handles with batteries	D-886.11.021



Set complete with: **mini3000 LED Ophthalmoscope, mini3000 LED F.O. Otoscope**,
 mini NT table charger
 5 each of 2.5 and 4 mm dia. AllSpec disposable tips (B-000.11.119)

mini3000 LED Fiber Optic (F.O.) Diagnostic Sets	2.5V
with 2 mini3000 rechargeable handles	D-860.11.022*

HEINE AllSpec® Disposable tips



- ⚡ **For single use**. Hygienic, no cross-infection.
- ⚡ **Original HEINE design**. Firm fit to the otoscope head.
- ⚡ **Assured quality**. No sharp edges.

AllSpec Disposable tips (grey) for BETA200, K180, mini3000 F.O., mini3000 Oscopes	
Pack of 1000 pcs. 2.5 mm dia. (infants) [03]	B-000.11.128
Pack of 1000 pcs. 4 mm dia. (adults) [03]	B-000.11.127
Case of 10 dispenser packs of 250 tips, 2.5 mm dia (infants) [01]	B-000.11.151
Case of 10 dispenser packs of 250 tips, 4 mm dia (adults) [01]	B-000.11.150
AllSpec Tip-dispenser [02]	B-000.11.148

AllSpec Tip-dispenser incl. tips 2.5 mm and 4 mm [02].
The right size, visible and instantly available. A clean new tip for each and every patient.

ⓧ: Single use only.



Reusable tips



- : Made of high-density SANALON S plastic with smooth external finish. Easy to clean. All common germicides can be used. Autoclavable at up to 134°C.
- : Ergonomic shape. Painless atraumatic insertion.
- : Positive locking design. Firm fit to the otoscope head.

Reusable tips (black)	1 piece	50 pieces
for BETA200, K180, mini 3000 F.O., mini 3000 Otoscopes		
Reusable tip 2.4mm dia.	B-000.11.107	B-000.11.207
Reusable tip 3.0mm dia.	B-000.11.108	B-000.11.208
Reusable tip 4.0mm dia.	B-000.11.109	B-000.11.209
Reusable tip 5.0mm dia.	B-000.11.110	B-000.11.210
1 set = 4 pcs. reusable tips SANALON S 2.4/3/4/5 mm dia.		B-000.11.111

Soft Disposable tips for reusable tips



- : Fits over the end of the AllSpec tip to protect the auditory canal.

Soft disposable tips (black)	
*Soft disposable tip 3 mm dia. 40 pcs./1 pack	B-000.11.141
*Soft disposable tip 5 mm dia. 40 pcs./1 pack	B-000.11.142

*Special Order - 4 to 6 weeks delivery time.

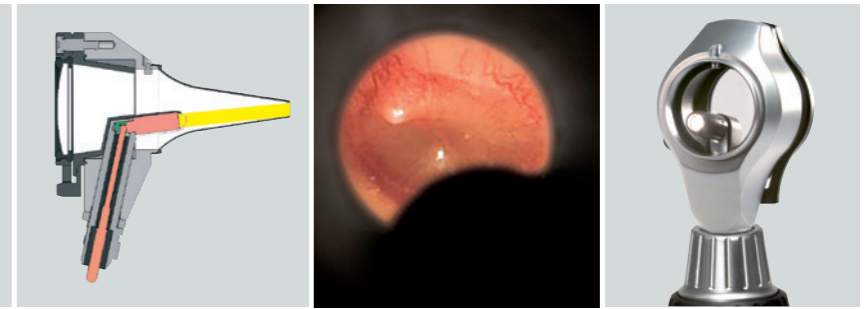
Insufflation Bulb



- : For pneumatic testing.

Insufflation bulb for BETA 200 , K 180, BETA 100 and K 100 Otoscopes	B-000.11.240
Insufflation bulb for mini 3000 F.O. Otoscope with connector	D-000.80.102
Insufflation port connector for mini 3000 F.O. Otoscope	D-000.80.101

Bright XHL Xenon Halogen direct illumination.



HEINE BETA 100® Diagnostic Otoscope

Diagnostic Otoscope with an all metal housing

An otoscope with direct Xenon Halogen illumination in an elegant all metal instrument head. Unusually versatile in combination with nasal and spreadable specula for easy instrumentation.

For use with reusable specula or UniSpec disposable specula. With tip adaptor (B-000.11.306) it is also possible to use AllSpec disposable tips.

- : All metal housing. Exceptionally tough and durable.
- : Instrument head matte black inside. Eliminates reflexes.
- : XHL Xenon Halogen Technology. Extremely bright, white light.
- : Large, scratch resistant glass viewing window with 3x magnification. Unobstructed view, distortion free image.
- : Swiveling viewing window built into instrument. Useful for instrumentation, cannot be misplaced.
- : Insufflation port. Reliable test of tympanic mobility.
- : Extensive choice of accessories. Very versatile e. g. for nasal examination.



- : All metal housing
- : Silica glass viewing window
- : Easy instrumentation



BETA 100 Diagnostic Otoscope	AV	TL
with 6 reusable specula, without handle	B-002.11.527	B-002.11.527 TL
without specula, without handle	B-002.11.525	B-002.11.525 TL
XHL Xenon Halogen spare bulb	X-002.88.049	X-002.88.049
Replacement sleeve for bulb. Reduces reflexes. [01]		B-000.11.212



HEINE BETA Diagnostic Set



Set complete with: **BETA200 Ophthalmoscope, BETA100 Diagnostic Otoscope,**
1 set (6 pcs.) of reusable specula (B-000.11.221)
10 UniSpec disposable tips, 4 mm dia. (B-000.11.237)
hard case

BETA Diagnostic Sets	3.5V (NiMH)	3.5V (Li ION)
BETA R rechargeable handle for mains socket	A-234.20.376	A-234.27.376
BETA NT rechargeable handle and NT 300 charger	A-234.20.420	
BETA L rechargeable handle and NT 300 charger		A-234.29.420

: Rechargeable handle with charge status display in the bottom insert.

: To order your kit with the TL "Twist Lock" connection style, simply add the suffix "TL" to the end of the item number. e.g. B-141.20.376 TL for the set with Twist Lock.



HEINE K 100® Diagnostic Otoscope

Diagnostic Otoscope with a high-impact polycarbonate housing



A very cost-effective diagnostic otoscope with direct Xenon Halogen illumination. The head is molded in high-impact polycarbonate.

For use with reusable specula or UniSpec disposable tips. With tip adaptor (B-000.11.306) it is also possible to use AllSpec disposable tips.

- **Polycarbonate construction.** Shock resistant.
- **Instrument head matte black inside.** Eliminates reflexes.
- **XHL Xenon Halogen Technology.** Extremely bright, white light.
- Large acrylic viewing window with **3x magnification.** Sharply focused distortion free image.
- **Swiveling viewing window built into instrument.** Useful for instrumentation, cannot be misplaced.
- **Insufflation port.** Reliable test of tympanic mobility.

- Polycarbonate construction
- Easy instrumentation



[01]

K 100 Diagnostic Oscope	AV	TL
with 3 reusable specula 3.5/4.5/5.5mm dia.	B-002.11.576	B-002.11.576 TL
without specula, without handle	B-002.11.575	B-002.11.575 TL
XHL Xenon Halogen spare bulb	X-002.88.049	X-002.88.049
Replacement cover for bulb [01] Reduces reflexes.		B-000.11.212

HEINE K 100® ENT Diagnostic Sets

Set complete with: **K100 Diagnostic Oscope**
3 reusable specula (B-000.11.222)
soft pouch



Sets K100 Oscope	2.5V	3.5V (NiMH)	3.5V (Li ION)
BETA battery handle	B-245.10.118		
BETA R rechargeable handle for mains socket		B-245.20.376	B-245.27.376
BETA NT rechargeable handle and NT 300 charger		B-245.20.420	
BETA L rechargeable handle and NT 300 charger			B-245.29.420

: Rechargeable handle with charge status display in the bottom insert.

: To order your kit with the TL "Twist Lock" connection style, simply add the suffix "TL" to the end of the item number. e.g. B-141.20.376 TL for the set with Twist Lock.



HEINE mini 3000® Otoscope

Compact pocket otoscope with direct illumination



Modern pocket otoscope in a unique, compact design. Can only be used with the mini 3000 handle system. Available in black or blue.

- ∴ **Instrument head matte black inside.** Eliminates reflexes.
- ∴ **Enhanced XHL Xenon Halogen Technology with 100% more light compared with conventional bulbs.** Very bright, concentrated white light for perfect illumination.
- ∴ **2 piece handle and head.** Easy to maintain, flexible. Handle compatible with other mini 3000 instrument heads.
- ∴ **Viewing window with 3x magnification** and optimized casing surface for razor sharp images and minimal reflection.
- ∴ **Swiveling viewing window built into instrument.** Useful for instrumentation, cannot be misplaced.
- ∴ **High quality handle: Chrome finish upper section/refined plastic.** Shockproof, sturdy, non-slip.
- ∴ **Attachment clip with integrated on/off switch.** Secure. Switches off automatically when returned to the pocket. 20,000 switch cycles guaranteed.
- ∴ **Replaceable batteries.** Size AA, or optional rechargeable battery with mini NT charger*.

- ∴ Modern pocket otoscope
- ∴ Switches off automatically
- ∴ Optional rechargeable handle

mini 3000 Otoscope	2.5V
with mini 3000 battery handle and 1 set (4 pcs.) reusable tips and 5 of both AllSpec disposable tips 2.5 and 4 mm dia., with batteries	D-001.70.220
with mini 3000 battery handle and 5 of both AllSpec disposable tips 2.5 and 4 mm dia., with batteries	D-001.70.210
with bulb, without handle and without accessories	D-001.70.206
XHL Xenon Halogen spare bulb	X-001.88.110



*To upgrade to a rechargeable instrument, with mini NT charger, please see page 121.

HEINE UniSpec® Disposable Ear Specula



- ∴ **Disposable.** Hygienic and safe.
- ∴ **Original HEINE design and manufacture.** Fit positively to the otoscope.
- ∴ **Assured quality.** No sharp edges.
- ∴ **A clean, new tip for each and every patient.** The right size visible and instantly available.

UniSpec Disposable Ear Specula (grey) for BETA 100, K 100, Operating Otoscope

Pack of 1000, 2.5mm dia. (infants) 1000 pcs./1 pack	B-000.11.242
Pack of 1000, 4 mm dia. (adults) 1000 pcs./1 pack	B-000.11.241
UniSpec tip dispenser	B-000.11.146

⊗: Single use only.

Reusable Specula



- ∴ **Molded in high density SANALON S, smooth surface.** Easy to clean, can be disinfected with conventional solutions. Autoclavable at 134°C.
- ∴ **Ergonomic Design.** Painless and atraumatic insertion.
- ∴ **Metal security lock with bayonet fitting.** Long lasting, positive fit to the otoscope.

Reusable Specula (black) for BETA 100, K 100 and Operating Otoscope

1 set = 5 ear specula and 1 nose speculum	B-000.11.221
3 specula 3.5/4.5/5.5mm dia.	B-000.11.222
Ear speculum 2.2mm dia.	B-000.11.215
Ear speculum 2.8mm dia.	B-000.11.216
Ear speculum 3.5mm dia.	B-000.11.217
Ear speculum 4.5mm dia.	B-000.11.218
Ear speculum 5.5mm dia.	B-000.11.219
Nose speculum 10mm dia.	B-000.11.220



Tip Adaptor



• **All metal construction.** Adaptor for AllSpec disposable tips (p. 15) for use with diagnostic (BETA 100, K 100) and operating otoscopes.

Tip Adaptor	B-000.11.306
-------------	---------------------

Insufflation Bulb



For Diagnostic Oscopes.

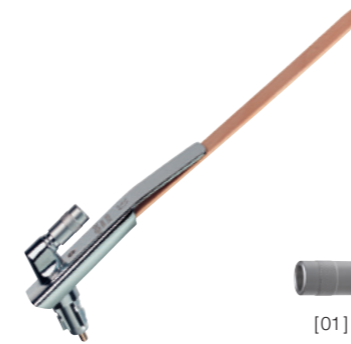
• **For pneumatic testing.**

Insufflation bulb for BETA 100 and K 100 Oscopes	B-000.11.240
--	---------------------



Tongue Blade Holder

For wooden tongue blades



• **XHL Xenon Halogen Technology.** Concentrated illumination of oral cavity and pharynx.
 • **Light guide for bulb.** Avoids dazzle.

Tongue Blade Holder	AV
for wooden tongue blades without handle	B-002.12.302

XHL Xenon Halogen spare bulb	X-002.88.049
Replacement Light guide for bulb [01]	B-000.12.308

*Special Order - 4 to 6 weeks delivery time.

Tongue Blade Holder

With Blade Ejector for use with HEINE Disposable Tongue Blades



• **XHL Xenon Halogen Technology.** Concentrated illumination of oral cavity and pharynx.
 • **Light guide for bulb.** Eliminates dazzle.
 • **Blade ejector.** No need to touch used blades.
 • **Only for HEINE Disposable Tongue Blades.**
 • **Disposable plastic tongue blades.** Strong and hygienic.

Tongue Blade Holder	AV
with blade ejector without handle	B-002.12.305

XHL Xenon Halogen spare bulb	X-002.88.049
Pack of 100 disposable plastic tongue blades [01]	B-000.12.304

*Special Order - 4 to 6 weeks delivery time.

HEINE mini3000® Tongue-Blade Holder

With blade ejector for HEINE Disposable Tongue-Blades

Can only be used with the mini3000 handle system.



• **Finger-tip pressure releases the used blade.** No need to touch the blade after use.
 • **XHL Xenon Halogen Technology.** Concentrated illumination of oral cavity and pharynx.
 • **Only for HEINE Disposable Tongue-Blades.** Strong and hygienic.

mini3000 Tongue-Blade Holder	2.5V
Tongue-blade holder head with bulb, without handle [01]	D-001.74.100
complete with mini3000 battery handle and 5 disposable blades, with batteries [02]	D-001.74.118

XHL Xenon Halogen spare bulb	X-001.88.037
------------------------------	---------------------

Pack of 100 disposable plastic tongue-blades [03]	B-000.12.304
---	---------------------



HEINE mini-c® Clip Lamp

Compact, long life pocket diagnostic light

Sturdy, long life pocket diagnostic light in a compact, modern design with chrome head. Bright, concentrated light thanks to our XHL Xenon Halogen bulb. mini-c Clip Lamp only fits mini-c handles. The mini-c handle is not compatible with mini3000 instruments. Handle available in black or blue.

- ∴ **Clip Lamp with Ear Light for otoplasty.** The Ear Light is used to ensure that hearing aids fit correctly.
- ∴ **Compact, oval, attractive light.** Lies ergonomically in the hand.
- ∴ **High quality handle: Chrome finish upper section/refined plastic.** Shockproof, sturdy, non slip.
- ∴ **Attachment clip with integrated on/off switch.** Secure. Switches off automatically when placed in the pocket. 20,000 switch cycles guaranteed.
- ∴ **Replaceable batteries.** Size AAA.
- ∴ **Registered Design.**



mini-c Clip Lamp	2.5V
with batteries [01]	D-001.73.109
with Ear Light with batteries (in blister pack) [02]	D-001.73.103
Ear Light for mini-c Clip Lamp 6 pieces in blister pack [03]	D-000.73.105
XHL Xenon Halogen spare bulb	X-001.88.108

HEINE mini3000® Clip Lamp

Compact, long life pocket diagnostic light

Sturdy, long life pocket diagnostic light in a compact, modern design with chrome head. Bright, concentrated light thanks to our XHL Xenon Halogen bulb.

Can only be used with the mini3000 handle system. Handle available in black or blue.

- ∴ **Compact, oval, attractive light.** Lies ergonomically in the hand.
- ∴ **2 piece handle and head.** Easy to maintain, flexible. Compatible with other mini3000 instrument heads.
- ∴ **Enhanced XHL Xenon Halogen bulb with 100% more light compared with conventional bulbs.** Bright, focused light.
- ∴ **High quality handle: Chrome-finish upper section/refined plastic.** Shockproof, sturdy, non-slip.
- ∴ **Attachment clip with integrated on/off switch.** Secure. Switches off automatically when replaced in the pocket. 20,000 switch cycles guaranteed.
- ∴ **Replaceable batteries.** Size AA, or optional rechargeable battery with mini NT charger*.



- ∴ Long life pocket light
- ∴ Switches off automatically
- ∴ Optional rechargeable handle

- ∴ **Ear Light for otoplasty [02].** The Ear Light is used to ensure that hearing aids fit correctly.

mini3000 Clip Lamp	2.5V
complete with mini3000 battery handle, with batteries [01]	D-001.73.131
mini3000 Clip Lamp head without handle	D-001.73.130
Ear Light for mini3000 Clip Lamp, 6 pieces in blister pack [02]	D-000.73.105
XHL Xenon Halogen spare bulb	X-001.88.107



*To upgrade to a rechargeable instrument, with mini NT charger, please see page 121.



HEINE mini 3000® Combi Lamp

Compact, all purpose illuminator with integrated tongue blade holder



[01]

Sturdy, long life pocket diagnostic light in a compact, modern design. Bright, concentrated light thanks to novel XHL Xenon Halogen bulb.

Can only be used with the mini 3000 handle system.
Available in black or blue.

- ∴ **Many applications.** Can be used as a general illuminator and as an illuminated tongue-blade holder for wooden blades and HEINE disposable blades.
- ∴ **2 piece handle and head.** Easy to maintain, flexible. Compatible with other mini 3000 instrument heads.
- ∴ **Enhanced XHL Xenon Halogen lens-bulb with 100% more light compared with conventional bulbs.** Bright, focused light.
- ∴ **High quality handle: Chrome-finish upper section/refined plastic.** Shockproof, sturdy, non-slip.
- ∴ **Attachment clip with integrated on/off switch.** Secure. Switches off automatically when replaced in the pocket. 20,000 switch cycles guaranteed.
- ∴ **Replaceable batteries.** Size AA, or optional rechargeable battery with mini NT charger*.

mini 3000 Combi Lamp	2.5V
on mini 3000 Battery Handle with 5 disposable blades and batteries	D-001.76.120
without handle	D-001.76.101
XHL Xenon Halogen spare bulb	X-001.88.107
Box of 100 disposable tongue-blades [01]	B-000.12.304



*To upgrade to a rechargeable instrument, with mini NT charger, please see page 121.